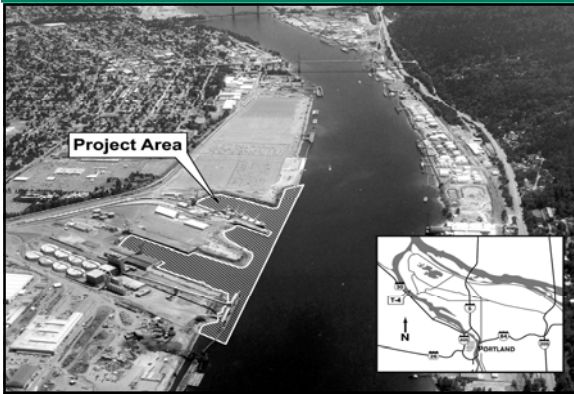


CASE STUDY

REMEDIATION TECHNOLOGIES



PROJECT: Port of Portland Superfund Site Nearshore Cap
LOCATION: Portland, OR
CONTRACTOR: Hickey Marine
ENGINEER: Anchor QEA
PRODUCTS: 850 tons of ORGANOCLAY™

REMEDIATION CHALLENGES:

US EPA and the Port of Portland signed a legal agreement to assess and clean up contaminated river sediment at the Port's marine Terminal 4. This agreement authorizes the first early action cleanup project in the Portland Harbor Superfund Site and reflects the Port's commitment to accelerate clean up of contaminated sediments in the Willamette River. The work will reduce risks to human health and the environment prior to the completion of the larger Portland Harbor investigation and will allow continued operation of the marine terminal. Investigation work has been completed and shows the presence of various contaminants in the sediments, including petroleum products, metals, pesticides, and polychlorinated biphenyls (PCBs) at levels that threaten human health and the environment. The Port of Portland and US EPA are coordinating sediment cleanup with upland cleanup work taking place concurrently under the oversight of the Oregon DEQ.

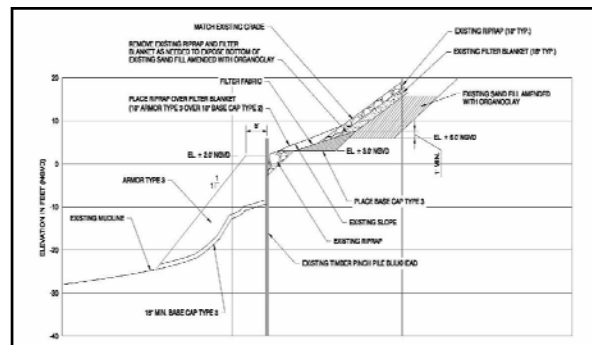
THE SOLUTION:

- Dredge and off-site disposal of sediments exhibiting the highest chemical concentrations.
- Where dredging is not feasible, construct a organophilic clay nearshore cap to isolate petroleum contaminated sediments from aquatic receptors and control a potential ongoing source to nearby areas.
- Stabilize the Wheeler Bay bank to minimize contaminant migration to the river.
- Dredge and off-site disposal of contaminated sediments in Slip 3 at Berth 410 in support of overall risk reduction in the Removal Action Area.

OTHER JOBSITE IMAGES:



Placement of Organophilic Clay Nearshore Cap



Cross Section of Slip 3 Remediation

CETCO provides a complete range of vapor mitigation and remediation products for soil, water, and sediment.



Remediation Technologies

1001 S. Linwood Avenue • Santa Ana, CA 92705 USA • Ph: 714.384.0111 • www.cetco.com